

如何獲准在工地安裝碎石機



土木工程拓展署
土力工程處
礦務部
電話：3842 7228 / 3842 7276
電郵：mines@cedd.gov.hk

香港九龍海庭道11號
西九龍政府合署南座6樓
傳真：2714 0193

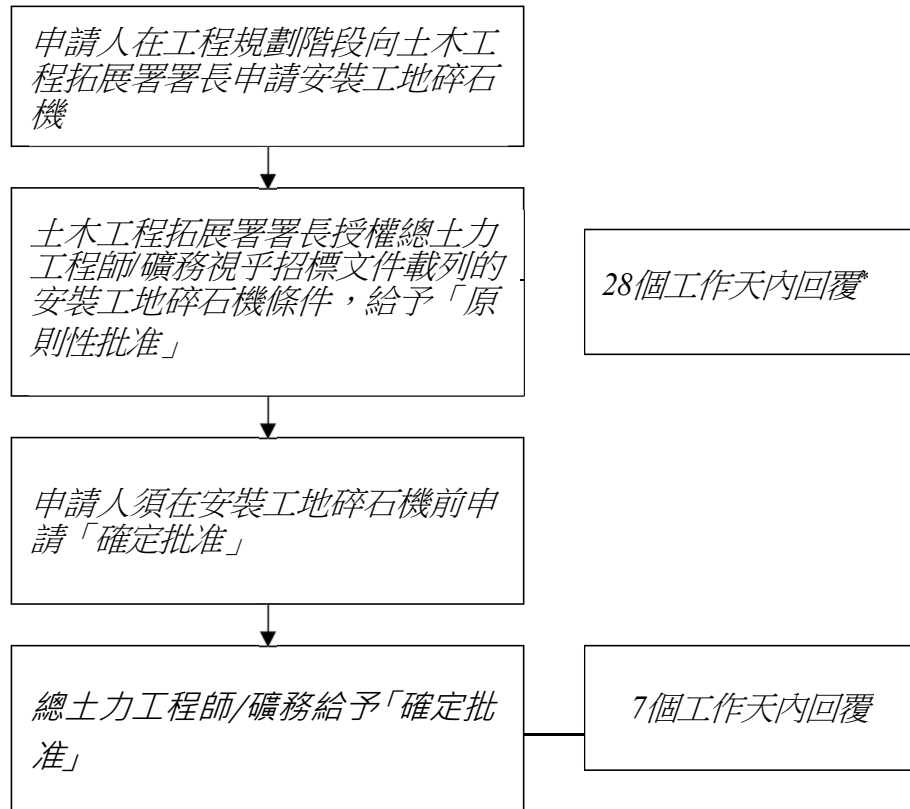
How to obtain approval for inclusion of a site crusher in a works project



Mines Division
Geotechnical Engineering Office
Civil Engineering and Development
Department
Tel : 3842 7228 / 3842 7276
e-mail : mines@cedd.gov.hk

6/F, South Tower
West Kowloon Government Offices
11 Hoi Ting Road, Kowloon
Hong Kong
Fax : 2714 0193

根據工程管理手冊土木工程第五章9.12段《工地碎石機》及第七章21.25段《工地碎石機的管制》，擬於工地安裝碎石機的政府工程項目，須於工程規劃階段取得土木工程拓展署署長的批准。在一般情況下，總土力工程師/礦務獲授權審核和批准有關申請。申請程序載於以下流程圖：

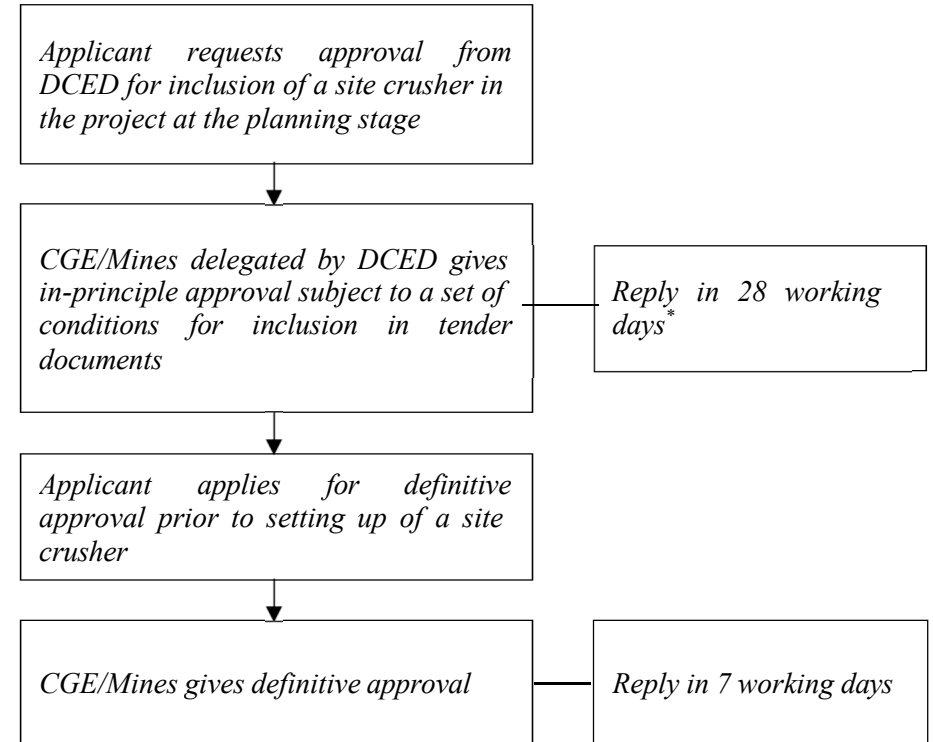


* 如須徵收費用，回覆時間將會與申請人協定。

申請「原則性批准」所需提交的資料：

- (a) 工程項目的詳細情況及工地位置
- (b) 挖掘及處理岩石/物料的數量及性質

In accordance with Project Administration Handbook for Civil Engineering Works Section 9.12 of Chapter 5 "Site Crushers" and Section 21.25 of Chapter 7 "Control of Site Crushers", for Government projects where it is proposed to include a site crusher in the project, approval from the Director of Civil Engineering and Development (DCED) shall be obtained at the planning stage. Such approval is normally delegated to the Chief Geotechnical Engineer/Mines (CGE/Mines). The sequence for seeking approval is given in the flow diagram below:



* Note : Different approval time will be agreed with the applicant when charge of royalty is required.

The details required for in-principle approval are:

- (a) details of the project and site location
- (b) amount and nature of rock/materials to be excavated or processed

- (c) 工程所需的石填料及碎石料 (若有的話, 包括入口及出口的數量)
- (d) 擬壓碎的物料及碎石製品的預定用途
- (e) 施工期
- (f) 擬定卸置碎石製品的計劃

申請「確定批准」所需提交的資料：

- (a) 負責該工程項目的政府部門
- (b) 工程範圍
- (c) 工程程序表
- (d) 碎石裝置的設計藍圖及機器清單 (包括主要機器的廠名、型號、體積等)
- (e) 有關設施的每月/每日預計吞吐量
- (f) 所需的許可期限
- (g) 顯示工地範圍內有關設施位置的位置圖
- (h) 擬於工地壓碎的物料來源、性質及體積
- (i) 各種體積的碎石製品的預定用途及預算產量
- (j) 預定卸置超逾工程所需碎石料的地點, 其體積及數量
- (k) 根據《空氣污染管制條例》向環境保護署署長申請批准運作碎石機器的申請書/核准書副本

為免申請延誤, 申請人應遵照上述申請程序提交所需的資料。申請書應送交香港九龍海庭道11號西九龍政府合署南座6樓礦務部總土力工程師/礦務。

若有疑問, 請致電 3842 7228 / 3842 7276 與我們聯絡。

- (c) rock fill and aggregate requirements (including import and export, if any) for the works
- (d) materials to be crushed and intended use of the crushed products
- (e) construction period
- (f) schemes for disposal of crushed products

The details required for definitive approval are:

- (a) client department
- (b) scope of works
- (c) programme of works
- (d) a layout plan and equipment list (including make, model, size etc. of the main equipment items) for the rock crushing installation
- (e) estimated monthly/daily throughput for the facility
- (f) required duration for the permission
- (g) location plan showing the location of the facility within the site
- (h) the source(s), nature and size of the material proposed to be crushed on site
- (i) the intended use and estimated quantities for each of the different size products to be produced
- (j) the intended disposal site, together with size and quantity, for any crushed rock which is surplus to requirements within the works
- (k) copy of application/approval from the Director of Environmental Protection for permission to operate the crushing plant under the Air Pollution Control Ordinance

To avoid delay in processing, applicants should follow the above sequence and submit the details as required in seeking approval. Application should be made to the CGE/Mines, Mines Division, 6/F, South Tower, West Kowloon Government Offices, 11 Hoi Ting Road, Kowloon, Hong Kong

For enquiries, please contact us at 3842 7228 / 3842 7276.